



SUNPACK
●●●●

High Speed Fully Automatic Strapping Solution

Corrugated Industry Solution



XT-HSD-02-1600 Strapping Machine



Corrugated Industry

XT-HSD-02 is a strapping system provides high performance solutions to production driven customers in corrugated industry.

Our equipment is designed and produced to optimize system operation and keeps the system operating at peak performance.

Machine Specification

Model No.	XT-HSD-02-1300	XT-HSD-02-1600
Control System	Schneider PLC+Touch screen	Schneider PLC+Touch screen
Motor Power	Schneider Servo motor+ SEW AC motor	Schneider Servo motor+ SEW AC motor
Sealing Method	Heat sealing	Heat sealing
Changover Sealing	Ultrasonic Welding	Ultrasonic Welding
Strapping Speed	Max 27 bundles /min (W≤300mm)	Max 24 bundles /min (W≤300mm)
Arch Size	W1950*H540mm	W1950*H540mm
Material	PP strap	PP strap
Material Specification	W:5mm, Thickness 0.35-0.75mm	W:5mm,Thickness 0.35-0.75mm
Strapping Tension	1-20KG	1-20KG
Roll Core Diameter	200mm	200mm
Roll Height	190mm	190mm
Table Loading Weight	2-25kgs	2-25kgs
Max Strapping Size	L1300*W1600*H350mm	L1600*W1600*H350mm
Min Strapping Size	L240*W180*H50mm	L240*W180*H50mm
Table Height	850-1000mm adjustable	850-1000mm adjustable
Power	380v 50hz 3phase , 4.2kw	380v 50hz 3phase , 4.2kw
Machine Simension	L2300*W2350*H2385mm	L2300*W2650*H2385mm

2 Standout Advantages for standard machine

01



Pure electrical control, No air supply is requested.

02



Wireless Remote Control

XT-HSD-02-1600 Strapping Machine-Function

-Auto Teaching

Whenever change the carton, machine will automatically detect carton size

-5 sides Squaring

Left, right, front, rear and top side alignment to make bundles in a good order

-Easy Strap thread

If strap fails to be loaded, just press the buttons at the both side of entrance.

-1 or 2 straps

Set from HMI to use 1 or 2 straps in travel direction, machine will automatically move and adapt to carton size



Standard Features

01 Integrated Squaring and Strapping

Make carton bundles in a good order and do strapping



02 Pure Electrical Mode

There is no air required to operate the entire system



03 Transport Control

Offers continuous top and bottom bundle control from machine entry through exit to provide secure squaring and strapping of unstable bundles.



04 Powered Exit Roller Conveyor

Powered exit roller conveyor provides perfect bundle transport and increased productivity.



05 Strap Delivery

Easy delivery of the strap to the sealer head.



06 High Output

Throughput capability up to 27 bundles per minute keeps pace with the fastest new flexo lines.

Heater
Temperature
Adjustable

Premier Features-Offered No Extra Cost



Dual Strap Dispenser

Dual strap dispensers with automatic strap changeover design. Ultrasonic welding for strap ends.



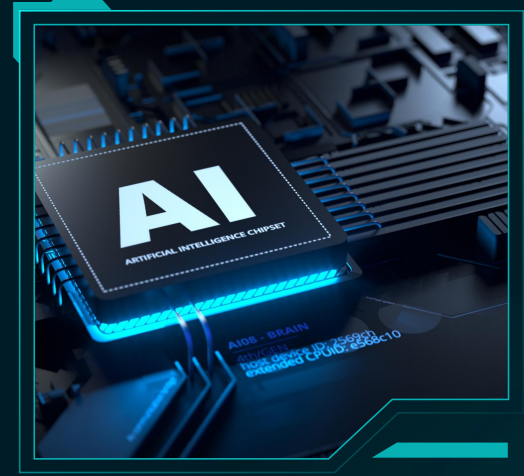
Wireless Control

Wireless remote troubleshooting. IP tracking for remote maintenance and troubleshooting.



Powered Adjustment

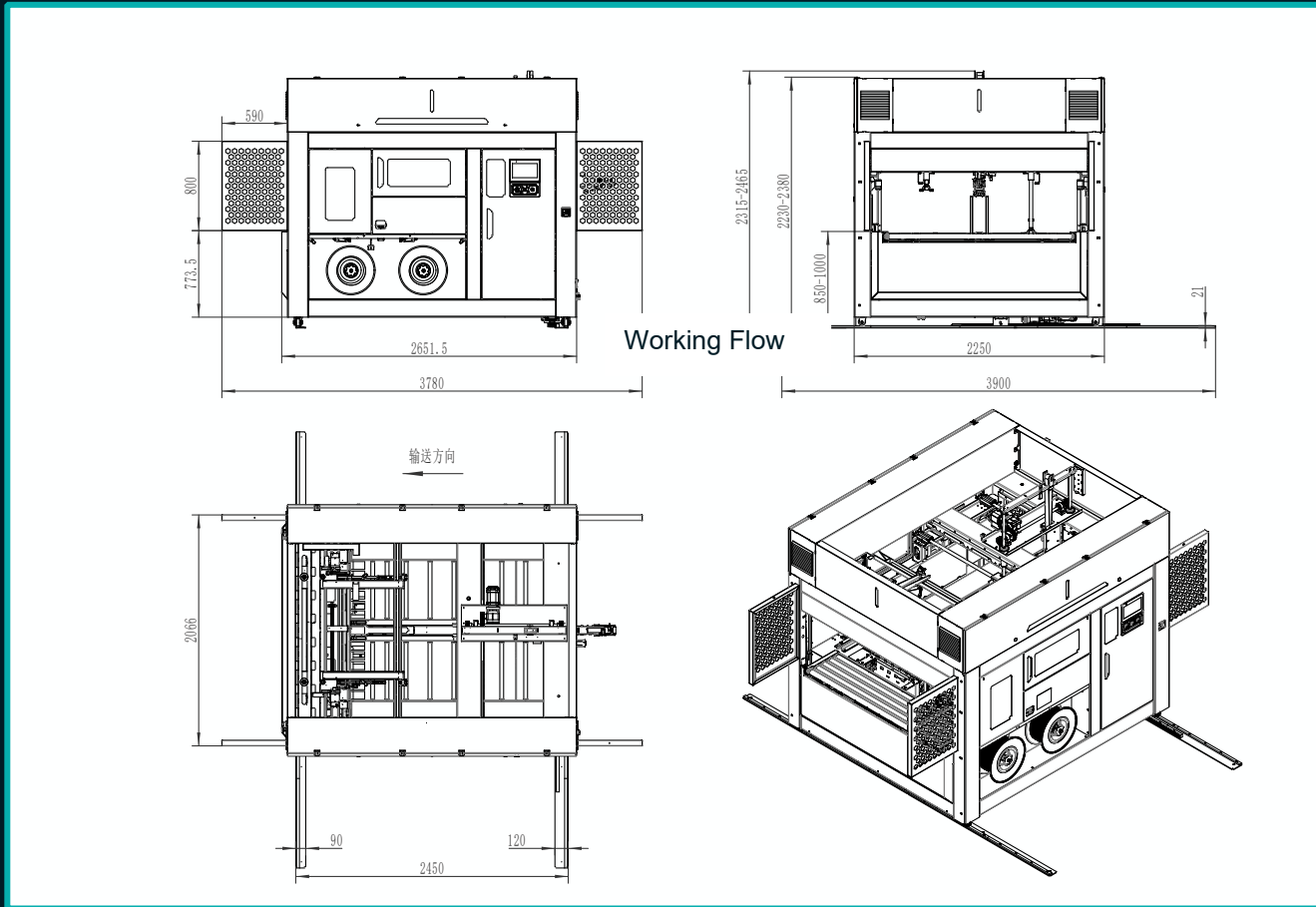
Powered adjustment of machine centerline. Move entire machine to adapt to previous production position.



Low Strap Indicator

When the strap is going to be used out. Machine will buzz.

Machine Dimension



Carton Size



Dimension		XT-HSD-02-1300	XT-HSD-02-1600
L	Max	1300mm	1600mm
	Min	180mm	180mm

Dimension		XT-HSD-02-1300	XT-HSD-02-1600
W	Max	1300mm	1600mm
	Min	240mm	240mm

Dimension		XT-HSD-02-1300	XT-HSD-02-1600
H	Max	50mm	50mm
	Min	350mm	350mm



XT-HSD-02-1600

Electrtrical Parts

01 Control Panel

-Schneider PLC
& HMI

02 Servo Motor

- 12 Schneider
Servo Motor

03 AC Motor

-6 SEW AC
motor

04 Sensor

- Siemens

05 Power Supply

- MW Power
Supply

Motor Configuration

All electrical components are top quality selection. The highest electrical configuration enables our machines run 24 hours in a high speed corrugated production system.

NAME	BRAND	MODEL NO	POWER	QTY	Function
Servo Motor	Schneider	BCH2LF0733CA5C	750W	2	Squaring
Servo Motor	Schneider	BCH2LF0733CF5C	750W	2	PP Feeding
Servo Motor	Schneider	BCH2LD0233CF5C	200W	2	Top Press
Servo Motor	Schneider	BCH2LD0233CA5C	200W	2	Adjusting
Servo Motor	Schneider	BCH2LD0433CA5C	400W	2	CKD
AC Motor	SEW	S37DRM63MS4	180W	1	Moving
AC Motor	SEW	S37DRM63MS4	180W	1	Top Press
AC Motor	SEW	R17DRM80MK4	750W	1	Pushing
AC Motor	SEW	R07DRM63MS4	250W	2	Carton Feeding
AC Motor	SEW	R07DRM71MS4	370W	1	Carton Outfeed
DC Brush Motor	Dunker	GR63*55/30V/3350rpm	100W	2	PP Strap Sealing
Servo Motor	Schneider	BCH2LD0233CA5C	200W	2	Storing

Easy HMI Operation



Speed Selection

- 1.0 x Speed
- 1.1 x Speed

Strap Quantity

- 1# Strap
- 2# Strap

Counter

- Record Accumated Strapping QTY
- Clear it

Mode Selection

- Square only
- By Pass

Operation Access from both sides

01

E-Stop

When any faults happen, it is available to press down E-stop from both sides.

02

Stop

When change carton size, press "Stop" , after pressing "Reset, machine will start to automatic set-up. After it is ready, press "Start" .

03

Pause

If need continue the previous operation, please press "Pause" when a middle stop is required.

04

Reset

After pressing E-stop, press "Reset" to start machine.



Values:

Honest, Caring, Learning, Progressive

Mission:

To create a respectable company and manufacture respectable products.

Vision:

Make packaging full of possibilities without boundaries;
Make packaging more environmentally friendly and energy saving;
Bring happiness and efficiency to the society.

<https://www.xutianapck.com>

E-mail: Joanna@xutian-china.com

SUNPACK

To Make Packaging More Valueable